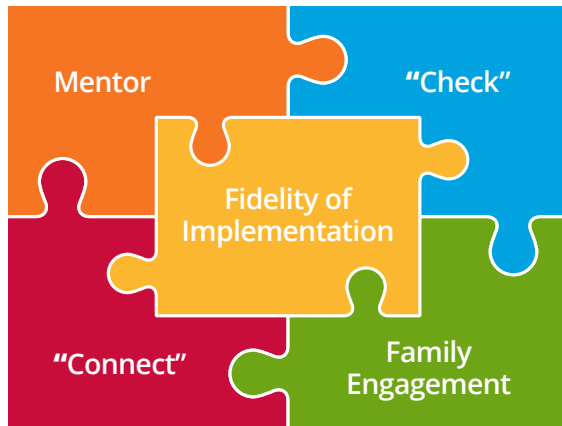




CHECK & CONNECT

INSTITUTE on COMMUNITY INTEGRATION | UNIVERSITY OF MINNESOTA

STUDENT ENGAGEMENT INTERVENTION



Check & Connect (C&C) is an evidence-based intervention used with K-12 students who show warning signs of disengagement with school and who are at risk of dropping out. There are four core components to implementing C&C with fidelity –

1. Mentor
2. "Check"
3. "Connect"
4. Family Engagement

STUDENT OUTCOMES

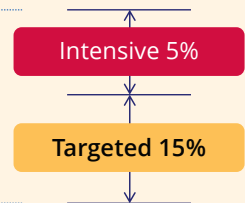
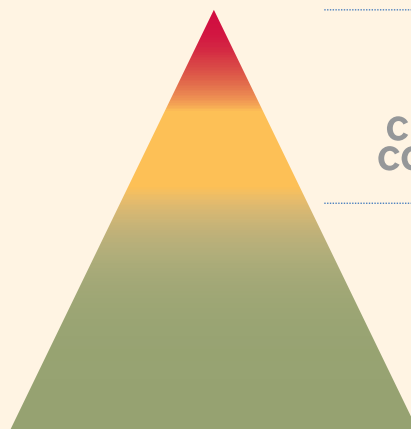
- + Increase in**
 - Attendance
 - Persistence in school
 - Credit accrual
 - School completion rates
- Decrease in**
 - Truancy
 - Tardies
 - Behavioral referrals
 - Dropout rates



EVIDENCE-BASED



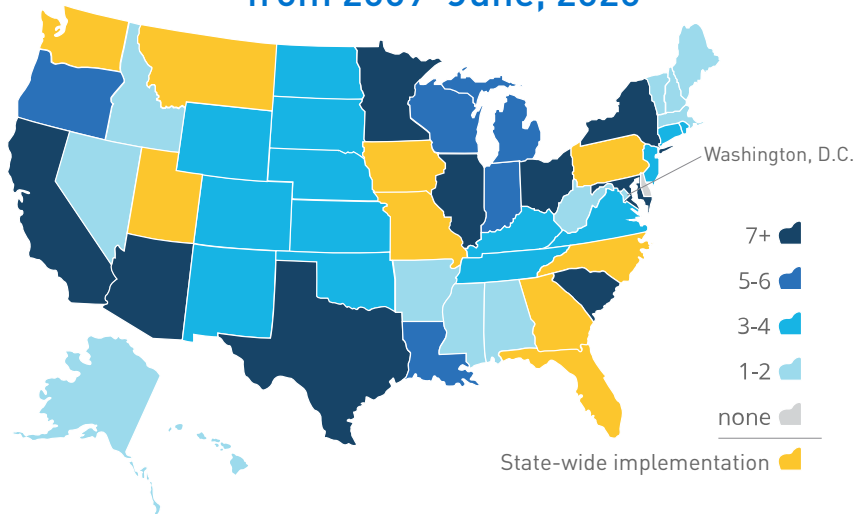
Of the dropout prevention interventions reviewed by the U.S. Department of Education's *What Works Clearinghouse*, Check & Connect is the only program found to have strong evidence of positive effects on staying in school.



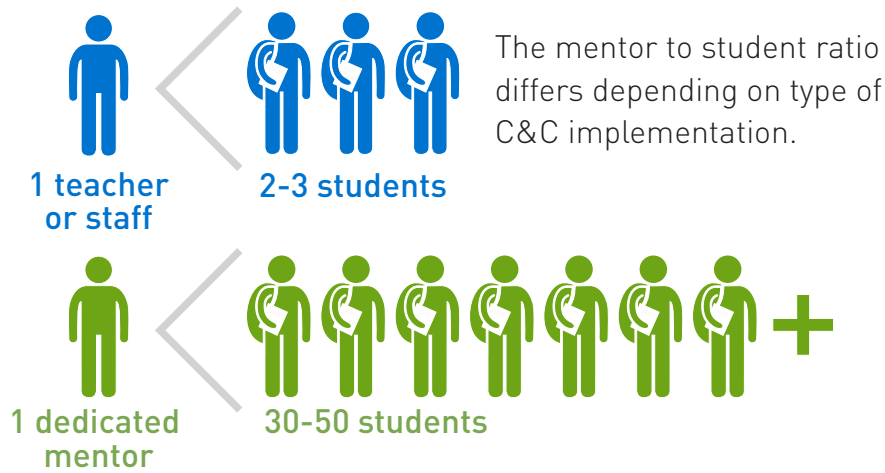
In a **Multi-Tiered System of Support (MTSS)**, C&C is implemented at Tier 2 and/or Tier 3

PRODUCTS & TRAINING

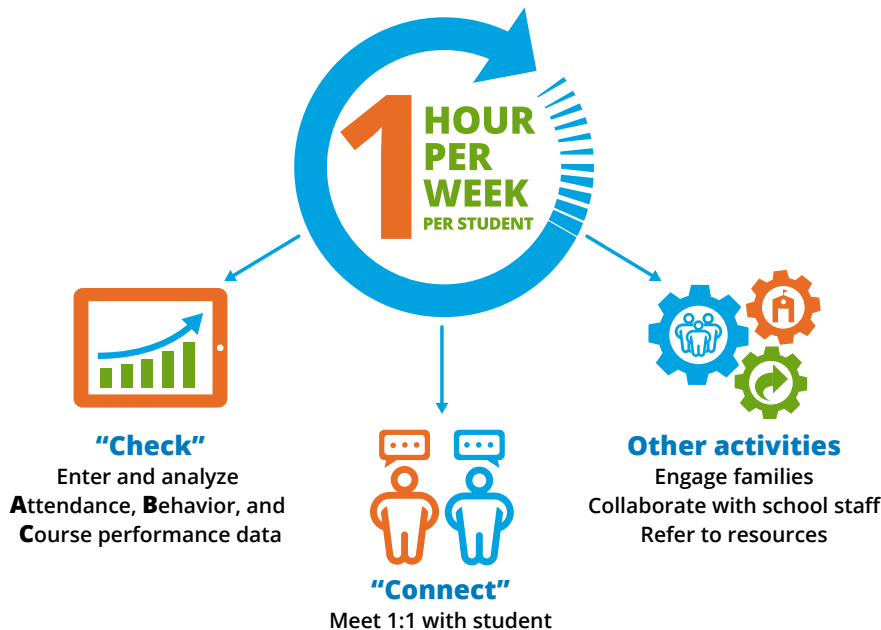
Number of sites trained in C&C by state from 2009–June, 2020



International sites — Australia, Canada, Cook Islands, Federated States of Micronesia, New Zealand, and South Africa



Mentor Time and Tasks



Implementation Manual

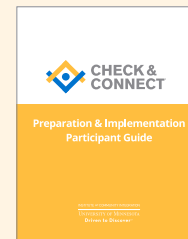
A guide to the theoretical foundations, components, elements, and steps for implementing Check & Connect.



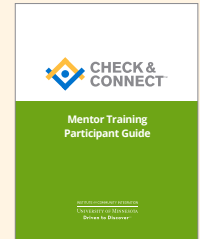
Trainings

Online and/or on-site options.

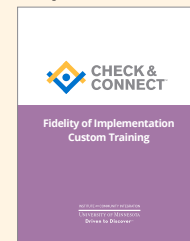
Preparation & Implementation



Mentor Training



Fidelity of Implementation



C&C App

- Supports student progress & success
- Reduces paperwork & saves time
- Creates visual data reports
- Guides mentors to engage families
- Enhances implementation of fidelity

