

## Frequently Asked Questions

### What is Check & Connect?

Check & Connect is a mentoring program focusing on increasing students' engagement at school and with learning as a means to improve student outcomes.

### Where is it implemented?

Check & Connect is most often implemented at the building, district, region, or even state level in elementary, middle, and high schools. Community-based organizations like the Boys & Girls Club of America and Communities In Schools are also using Check & Connect in conjunction with schools. In some areas, the Department of Corrections are using Check & Connect to help adjudicated youth transition back into their home communities and to prevent recidivism.

### What grade levels are served?

Check & Connect can be used with students in elementary, middle, and high school. Many researchers and educators have argued that addressing truancy at an early age is critical to later school success.

### Who can be a mentor?

Existing staff (teachers, counselors, administrators), newly hired staff (with single role of mentor), and community volunteers can all serve as Check & Connect mentors. The important factor, regardless of who fills the role of mentor, is that the mentor embodies the personal characteristics of an effective Check & Connect mentor.



Students face many challenges that influence their academic success—at home, in school, and in the community. We know from research that dropping out of school is not a one-time event; it's a process.\* When

we review and respond to students' data regularly and with care, we can course-correct those showing warning signs of early withdrawal using proven interventions like Check & Connect.

Check & Connect is a student engagement intervention with the mentor as the cornerstone. Students in Check & Connect meet with their mentor one-on-one at least weekly to talk about their progress in school and the multiple influences they face, brainstorm solutions to any relevant issues, and support their engagement at school and with learning.

The Check & Connect mentor —

- **Builds a strong relationship** with the student based on mutual trust and open communication focused on success at school and with learning.
- **Systematically "Checks" student performance** variables (warning signs of disengagement, such as attendance, behavior referrals, and course performance) using school data.
- **"Connects" or supports the student** by putting immediate interventions in place based on "Check" data; problem solving around influences of home, school, and community; and connecting them to local resources, as needed.
- **Partners with parents/families**, functioning as a liaison between home and school and striving to build constructive family-school relationships.

### Check & Connect's Concept of Student Engagement

Engaging students is more than promoting traditional academic behaviors and attendance. It's also about considering students' emotional and intellectual feelings about school. Attending to affective, cognitive, academic, and behavioral engagement is essential for improving outcomes.

\* Finn, J. D. (1989). Withdrawing from school. *Review of Educational Research*, 59(2), 117-142.

## Training Services

We offer various training options based on the needs of your site, whether you're starting anew or scaling-up your Check & Connect implementation:

- **Preparation and Implementation Training**  
For administrators to plan for implementation.
- **Mentor Training**  
For mentors to gain competency-based skills.
- **Comprehensive Implementation Training**  
Combination of above 2 trainings (cost effective).
- **Fidelity of Implementation Workshop**  
For current implementers to ensure ongoing fidelity.

## Certification Trainings to Build Capacity

In addition, we can train your staff to train others in the implementation of Check & Connect across your district, region, or state. These training options can help sustain your medium- to large-scale program (includes a series of trainings and technical assistance offerings):

- **Train-the-Coach Certification**  
Experienced Check & Connect coordinators learn how to provide ongoing coaching to new and existing mentors in their **district or region**.
- **Train-the-Trainer Certification**  
State-level professionals learn how to prepare administrators, coordinators, and mentors in the implementation of Check & Connect in their **state**.

**Contact us** for more information and to find out which training best suits your organization.

*According to the US Department of Education's [What Works Clearinghouse](#), Check & Connect is the only dropout prevention intervention found to have positive effects on staying in school.*

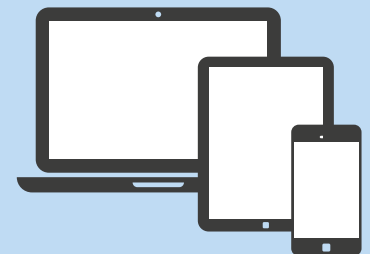
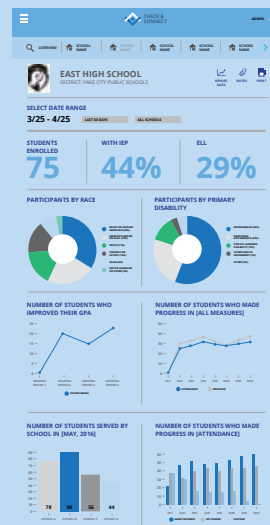


## Check & Connect: Implementing with Fidelity

by Drs. Sandra Christenson, Angie Pohl, and Karen Stout

The Check & Connect implementation manual walks readers through the Check & Connect implementation process — outlining the key components, providing clear guidance on implementation steps, and presenting the underlying theories and research behind the model. It also contains the forms needed for referral, intake, monitoring student performance, program evaluation, fidelity self-assessment, and more. *Implementing with Fidelity* is essential for Check & Connect coordinators and mentors at your site.

## Online Monitoring and Reporting Tool Coming in 2017



Watch for our new web-based Check & Connect application for mentors, coordinators, and administrators to monitor and report on student progress via their mobile phone, tablet, or computer! Available early 2017.



Web: [checkandconnect.umn.edu](http://checkandconnect.umn.edu)  
Email: [checkandconnect@umn.edu](mailto:checkandconnect@umn.edu)  
Toll free: +1 (866) 434-0010

Institute on Community Integration - U of M  
6 Pattee Hall, 150 Pillsbury Drive SE  
Minneapolis, MN 55455

