

Scaling Impact: Integrated Student Supports (ISS) and Check & Connect

Presented by

Collin McColskey-Leary

Director, Research and Implementation

***Surrounding students with a community of support,
empowering them to stay in school and achieve in life.***



Communities
In Schools

North Carolina

Agenda

- Overview of CIS and Check & Connect
- Why Check & Connect
- Partnership Tree
- Implementation in NC and beyond
- Question and Answer

Questions

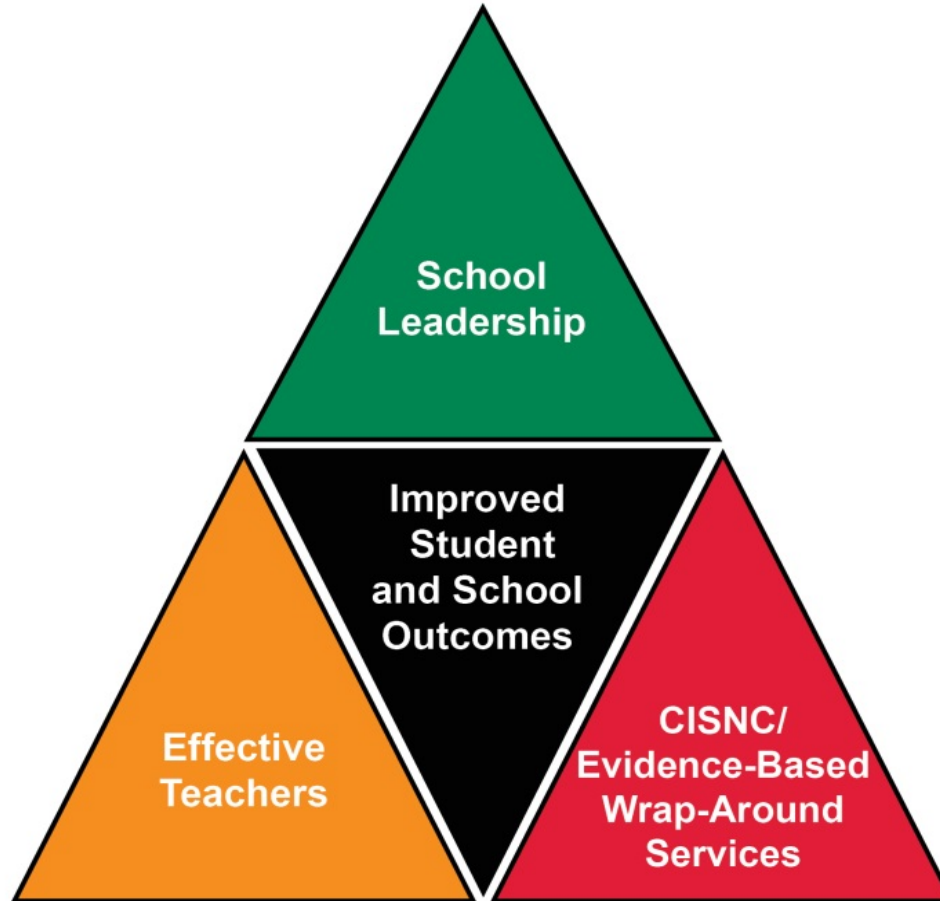
- Are you from a Department of Education...School District...School...Other Government Agency...Non-profit...Other?
- How familiar are you with Communities In Schools...Check & Connect?
- Based on title – what do you want to take away?

Starting with the end in mind

Integrated Student Supports

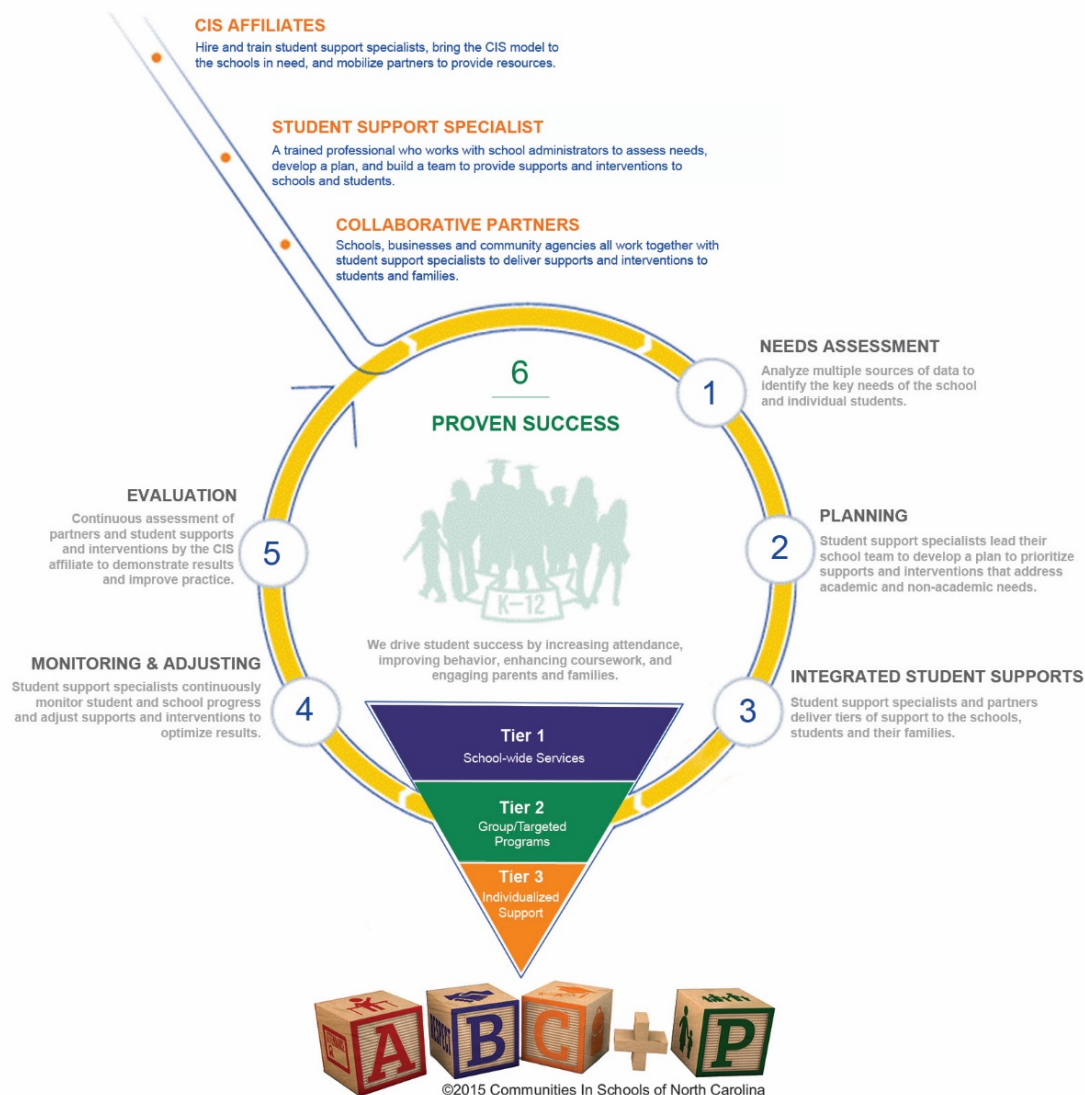
- Integrated student supports (ISS) are a school-based approach to promoting students' academic success by developing or securing and coordinating supports that target academic and non-academic barriers to achievement.

Comprehensive School Improvement Framework

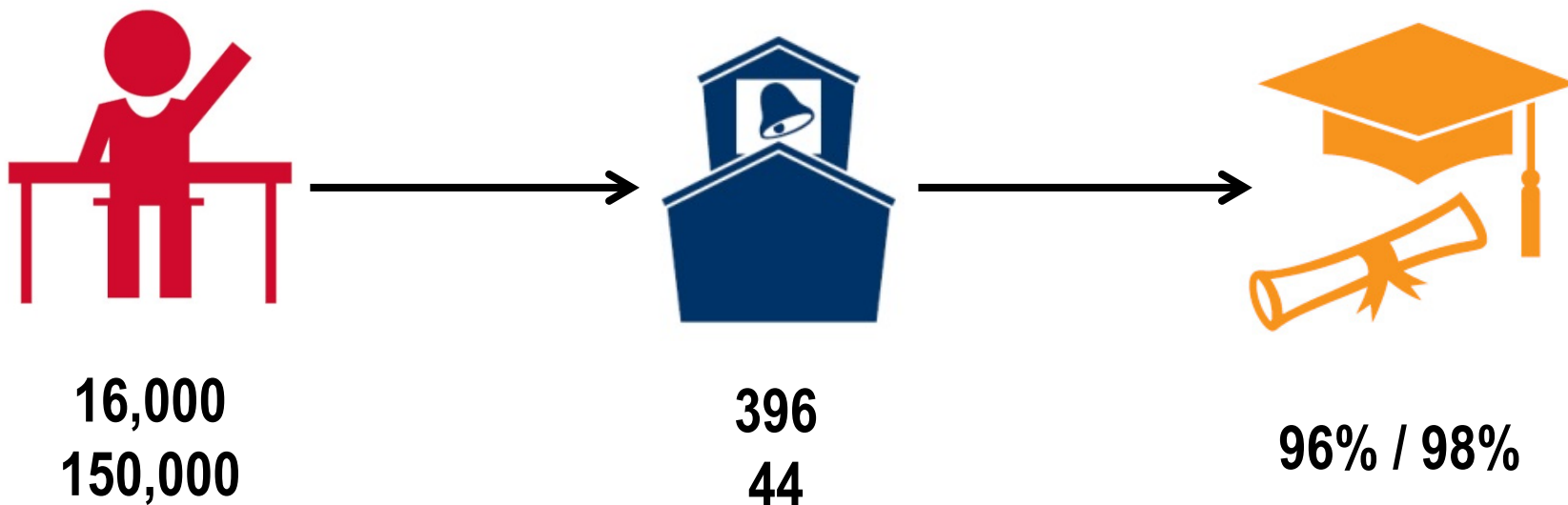


©2015 Communities In Schools of North Carolina

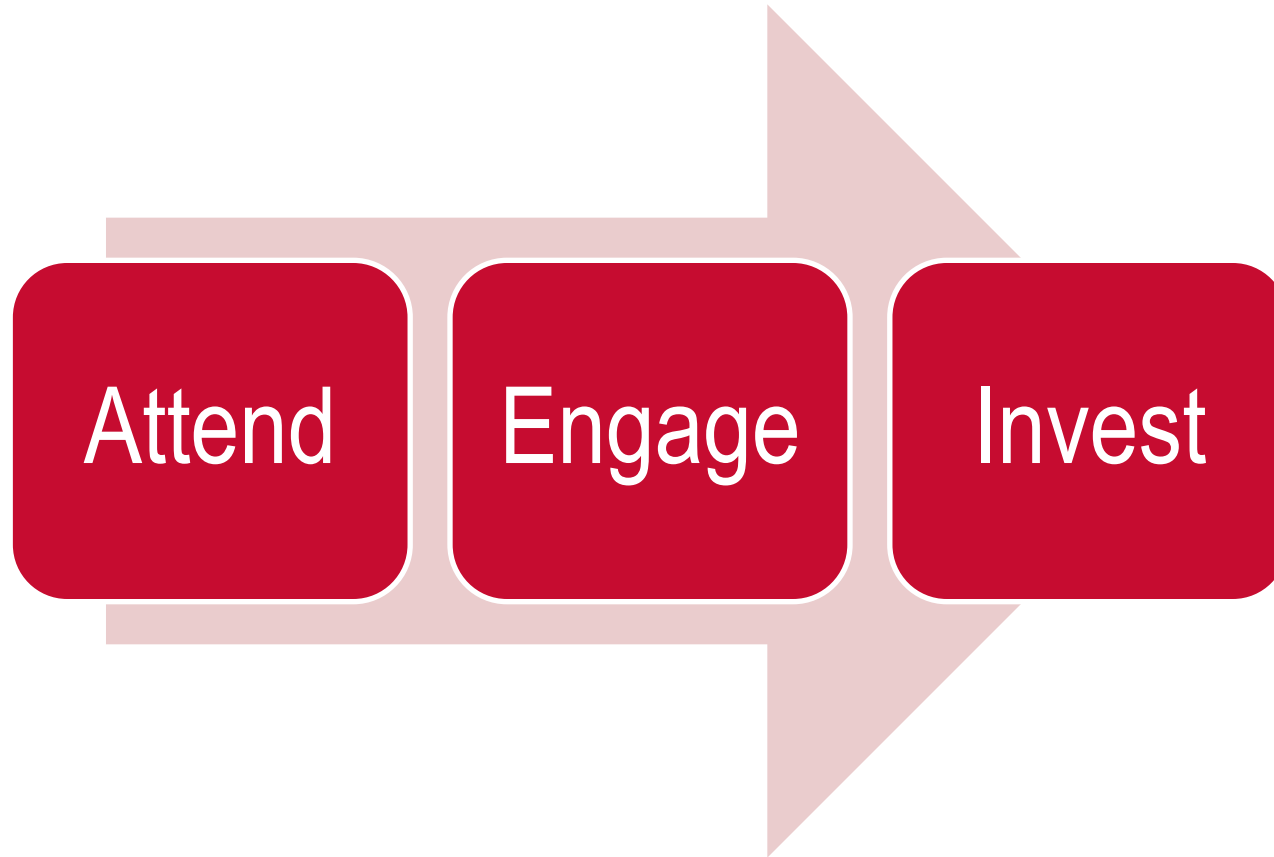
The CIS Model



Impact across North Carolina



Check & Connect





One word...

IMPACT

Selling Points

- Best-practices
- Relevance
- Credibility
- Structure
- Evidence

CISNC's Decision Tree

Q1: Is there an existing community partner that can deliver the service?

No

Q2: Does the service address (1) a need set forth in the needs assessment, (2) fit into the ABC+P framework, and (3) have evidence of influence on student success?

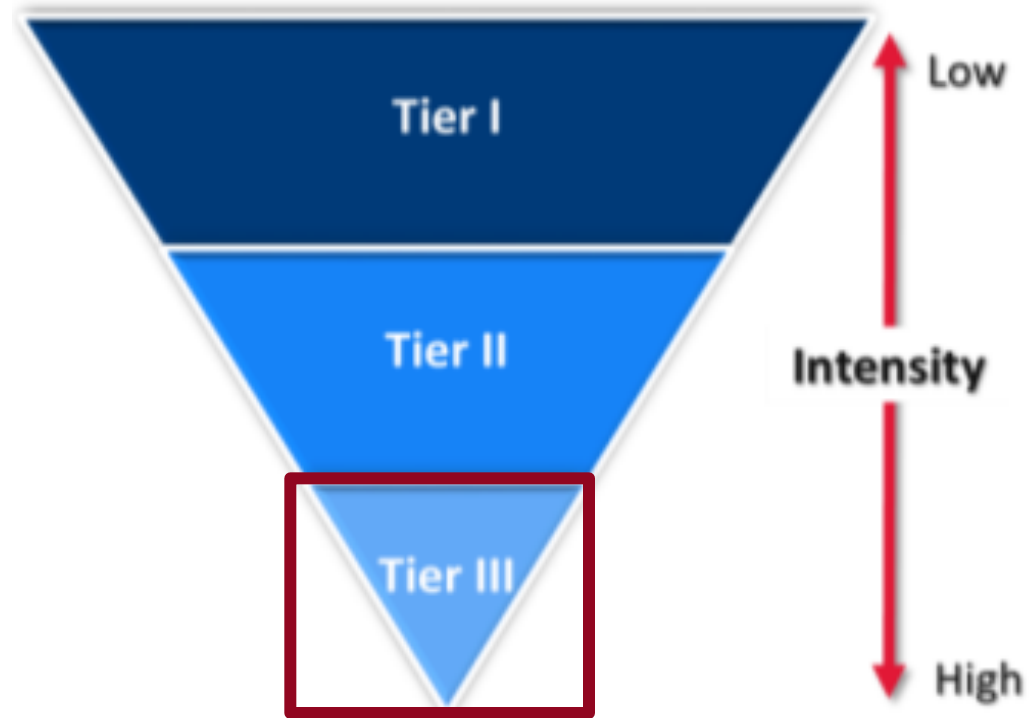
Yes

Q3: Does CIS have TIME and MONEY to add this high quality service to existing workload and is the service a priority?

Yes

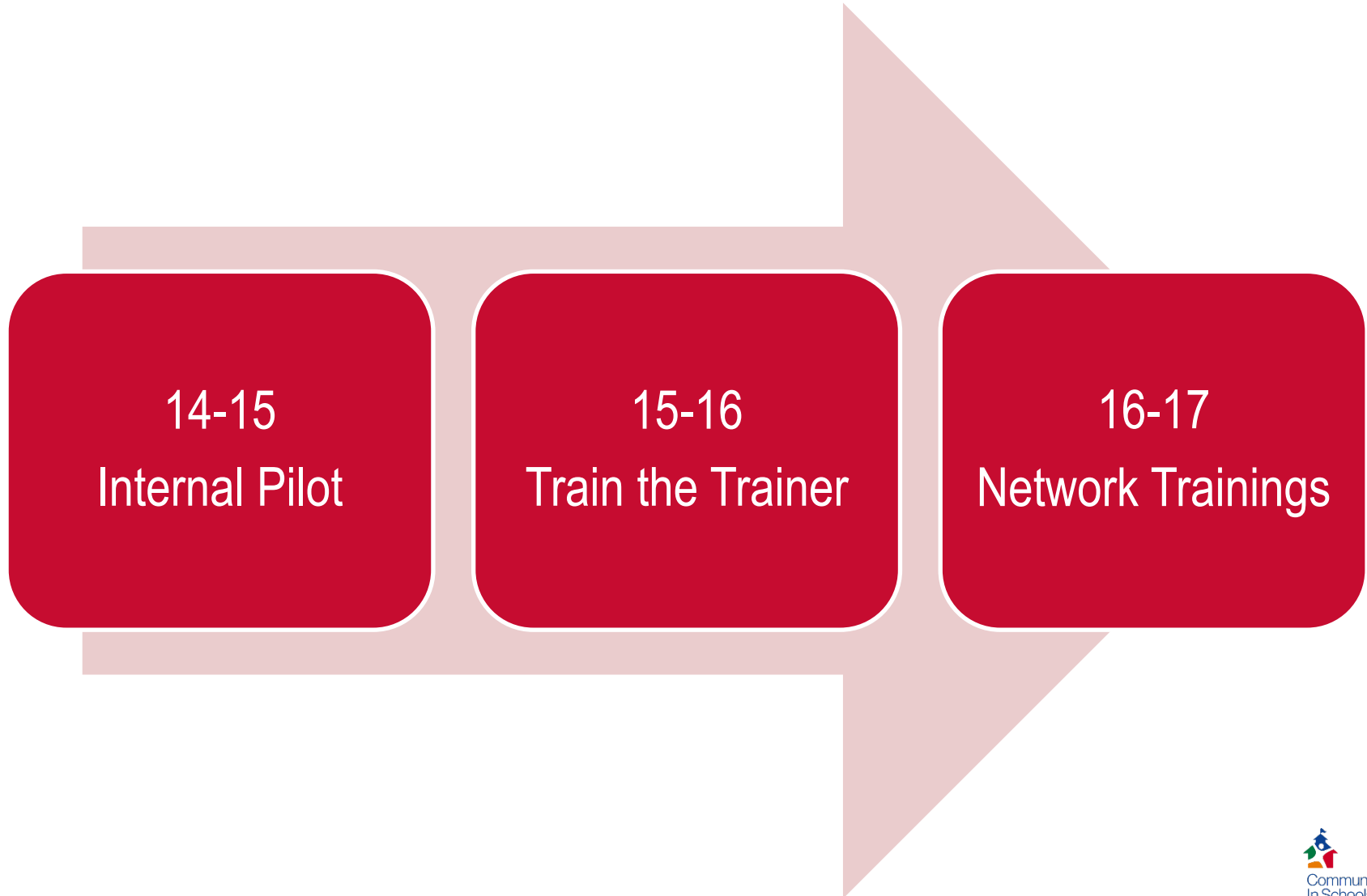
CIS delivers service. Prioritize task in relation to existing work that is impacting student success. Implement and check-in to ensure service is having desired outcome.

System alignment

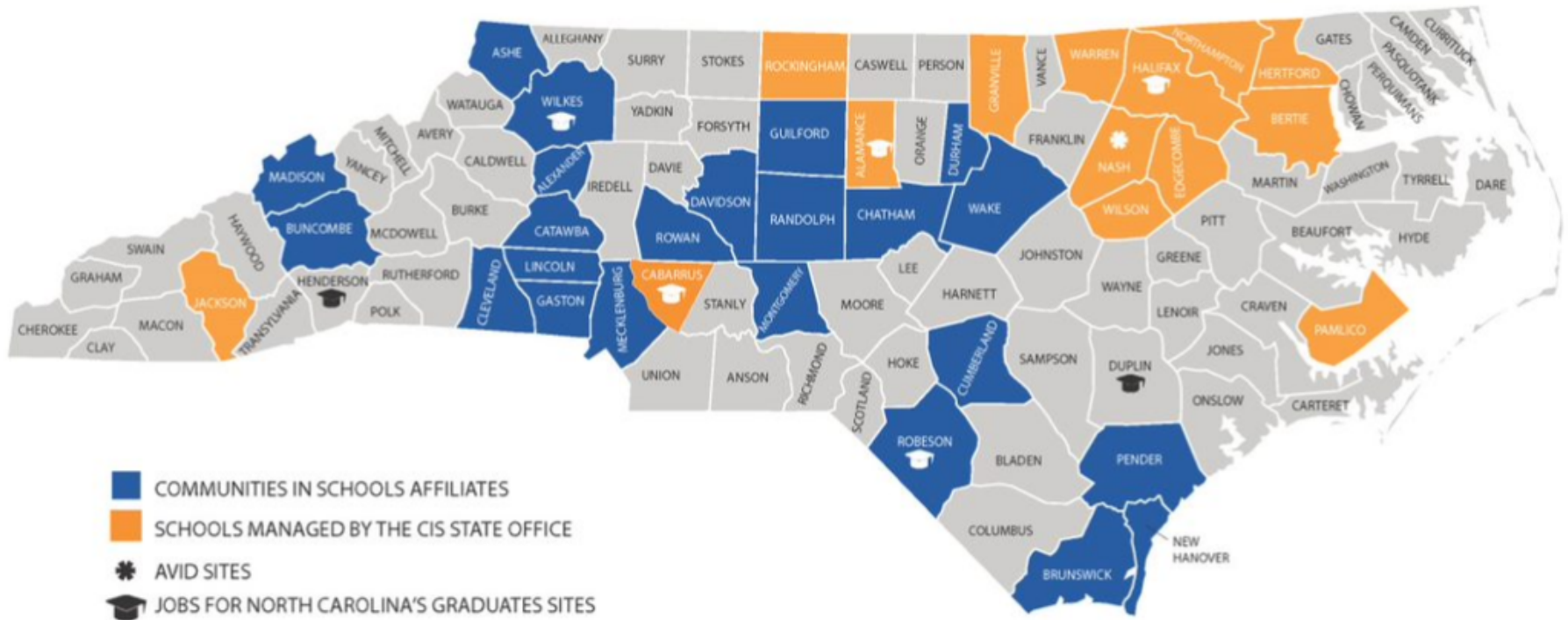




Implementation Timeline



Implementation



22 affiliates, 39 counties, 44 districts across North Carolina

Challenges



Check & Connect Partnership

- More than a vendor
- Understanding and open to exploration
- On-going support
- Most of all...student focused

Impact

- Increased data usage
- Consistency
- Perceptions of CIS in NC
- Partnership with great organization and people

Future

- Social enterprise
- Expand training capacity to include districts in NC
- Possibility of expansion to entire CIS network
- Evaluate

STAY TUNED



facebook.com/cisnc



@cisnc



cisnc

www.cisnc.org

Learn More

Communities In Schools of North Carolina

222 North Person Street

Suite 203

Raleigh, NC 27601

Phone: (919) 832-2700

Toll Free: (800) 849-8881

Fax: (919) 832-5436

www.cisnc.org



Communities
In Schools

North Carolina