



The Treehouse Approach to Measuring Progress Over Time

Christian Madruga
Alison Crow



Today's Agenda

Introduction to Treehouse

Foster Care Stats

What we Measure, How we Measure it, and Why we Measure it

Challenges & Learnings Along the Way

What's Next for Treehouse

Q & A



treehouse[™]
giving foster kids a childhood and a future

Supporting Foster Youth to Graduate High School

Alison Crow, Christian Madruga





tr



**Treehouse's Goal:
Foster youth graduate from high
school at the same rate as their peers
with a plan for their future.**





Treehouse Programs

Graduation Success

Program model incorporates Check & Connect, Student Centered Planning, and Education Advocacy. Staff support youth in attaining their goals and completing high school.

Educational Advocacy

Work with schools, social workers and caregivers to remove critical barriers to school success for 1,200 children and youth in foster care statewide

The Wearhouse

Provide 100,000 items of clothing, school supplies & toys that help 1,900 foster kids feel good, fit in and succeed in the classroom.

Little Wishes & Summer Camp

Pay for important extracurricular and school activities for 1,200 foster kids that research shows lead to better school and life outcomes. We also send 400 youth to summer camp and other summer learning and leadership experiences.

Foster Care Facts

The average youth in foster care experiences

3

placement changes

6

months of lost academic progress per move

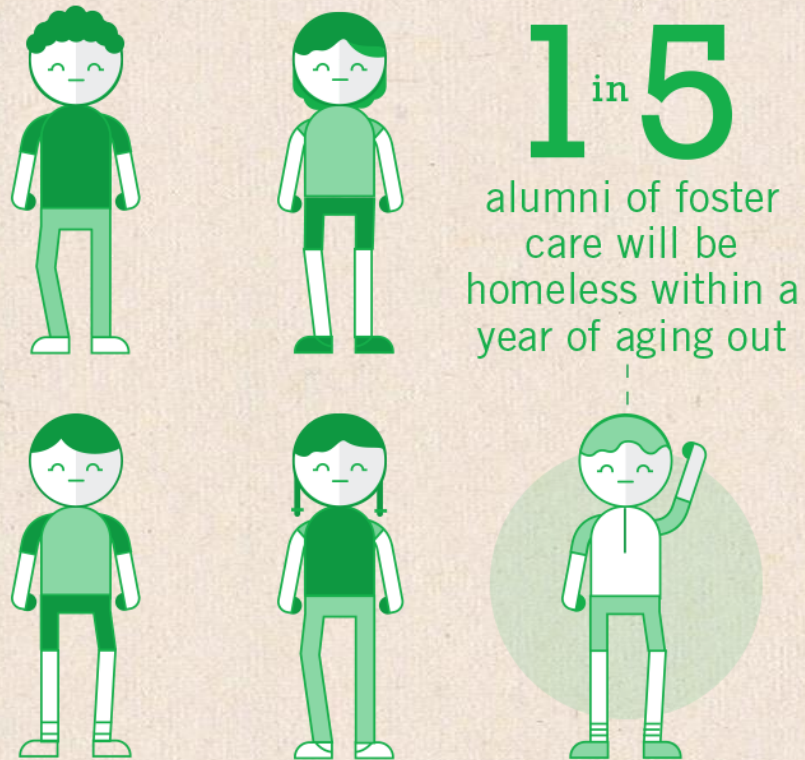


Youth in foster care suffer PTSD at 2x the rate of war vets

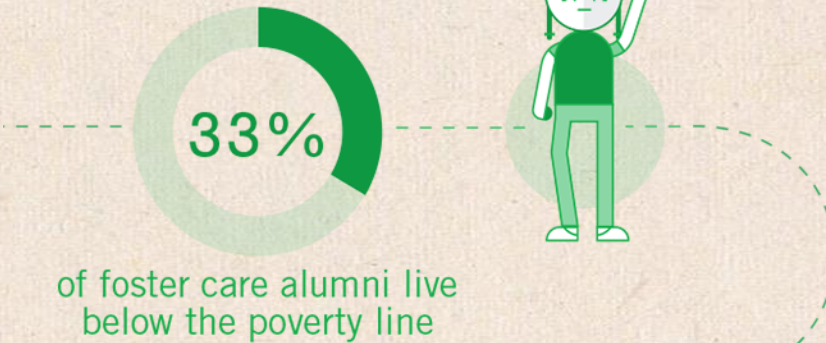
2X



No High School Diploma = Dire Outcomes



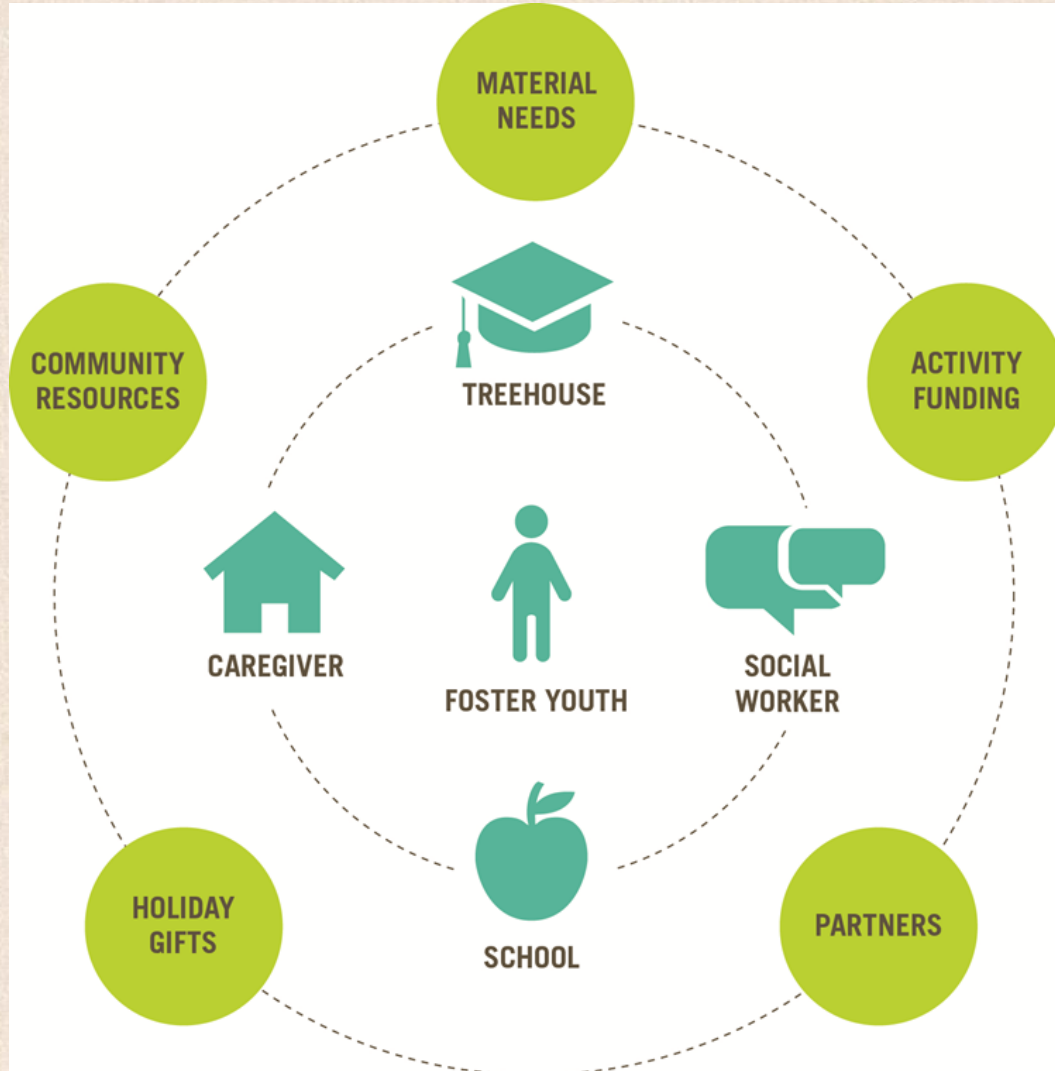
poverty line





Graduation Success Program Model

This year, we expect to serve 800 youth in 26 school districts



Check & Connect:

Daily monitoring & individualized interventions:

A = Attendance

B = Behavior

C = Course Performance

Build a support team around youth

Student-Centered Planning:

Youth-driven Student-Centered Plan

Educational Advocacy to remove barriers

Youth define their support network

Extracurricular and school activities

Meet material needs

Coach self-determination & persistence

Continuous Learning and Improvement:

Continuous programmatic changes based on learnings

Now that we have a Robust Program Model...



Key Challenge: Incomplete Data

Technology

Data Entry compliance

Beautiful Dashboards



Key Challenge: Insufficient Analytics

Christian

Yay! So much data!

BIG DATA DASHBOARD

SOMEONE PLEASE TELL ME HOW THE KIDS ARE DOING!!!

CEO

Analysis

Understanding Progress



Solution! Collaborative Analytics & Innovation

Incorporating staff voice in decision-making led to some life-changing outcomes.



“What if, and I know this sounds kooky, we communicated with the employees.”

Our Big Questions

- **Do we have High Quality & Complete Data?**
- **Does Our Data Provide us with Direction to Act?**



**Types of
Action**

Direct Service Level Action
Management Level
Systems Level

Qualitative + Quantitative = Deep Understanding!

Quantitative Data

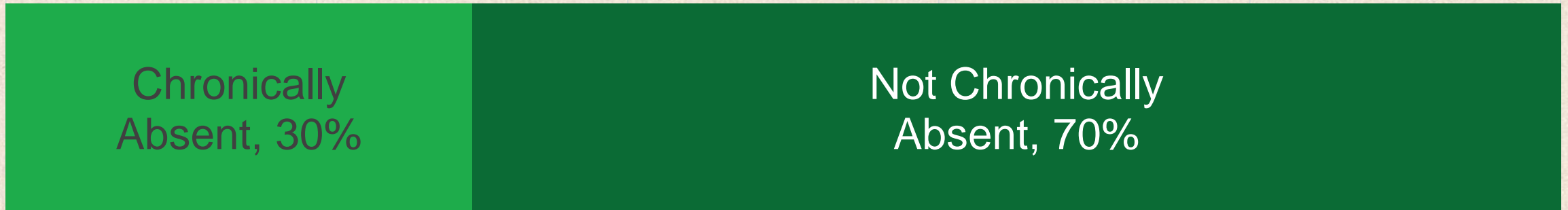
Chronic Absenteeism
On Track to Graduate
General Risk Indicators (ABCs)

Qualitative Data

Student Progress Survey
Focus Groups
Interviews

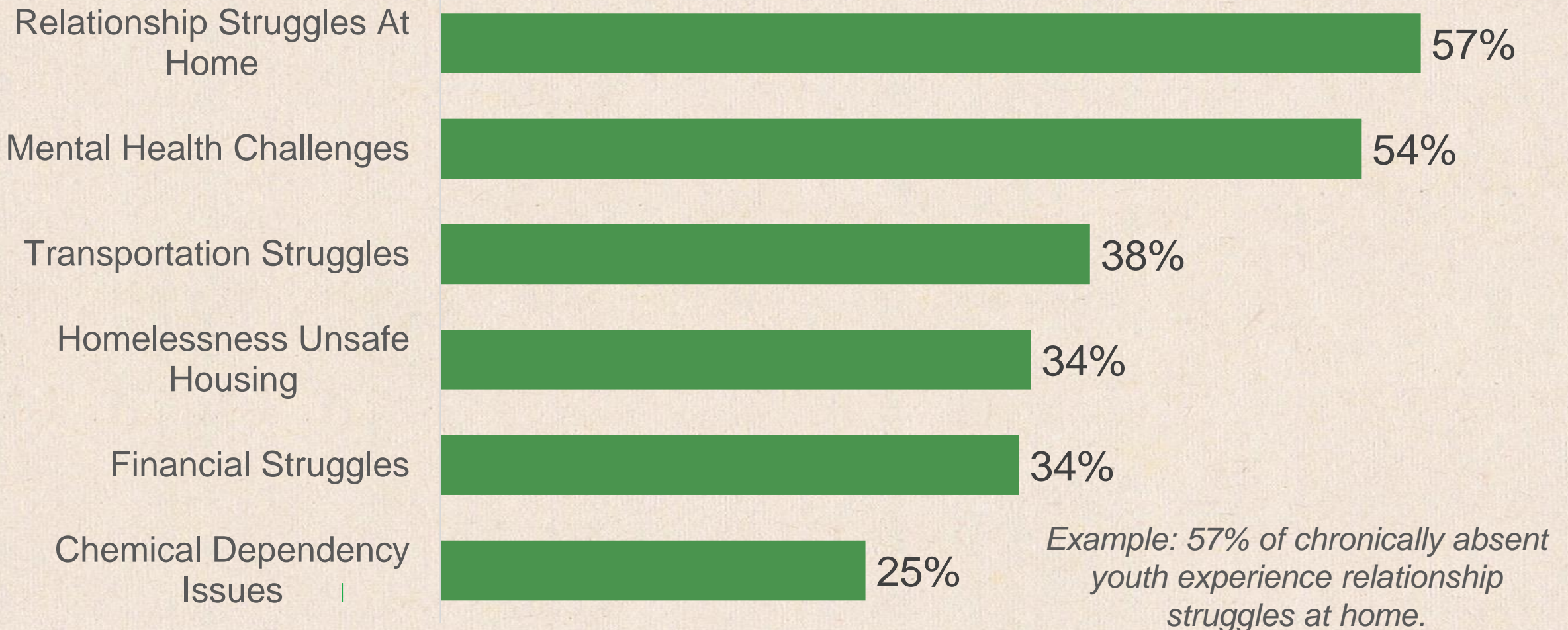


Chronic Absenteeism



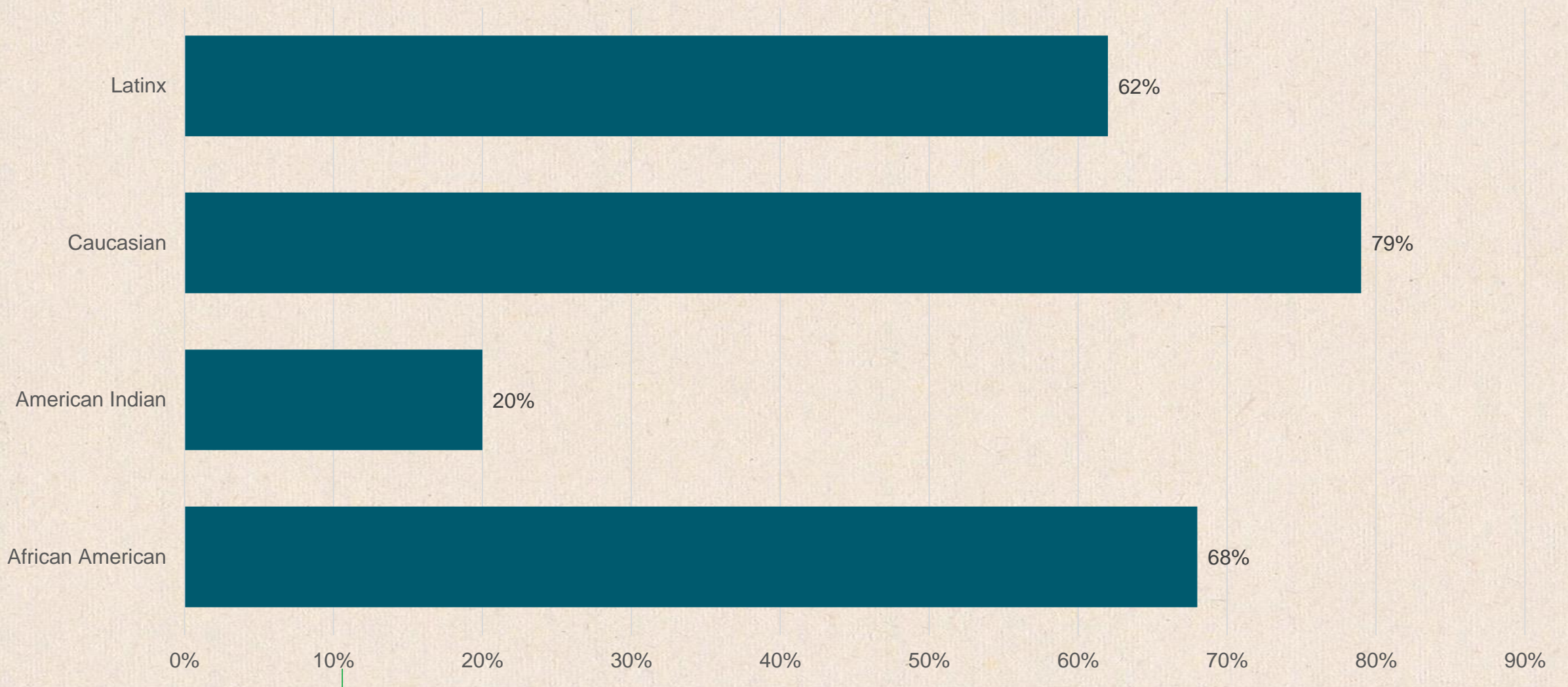


Most Prevalent Barriers Experienced by Chronically Absent Youth



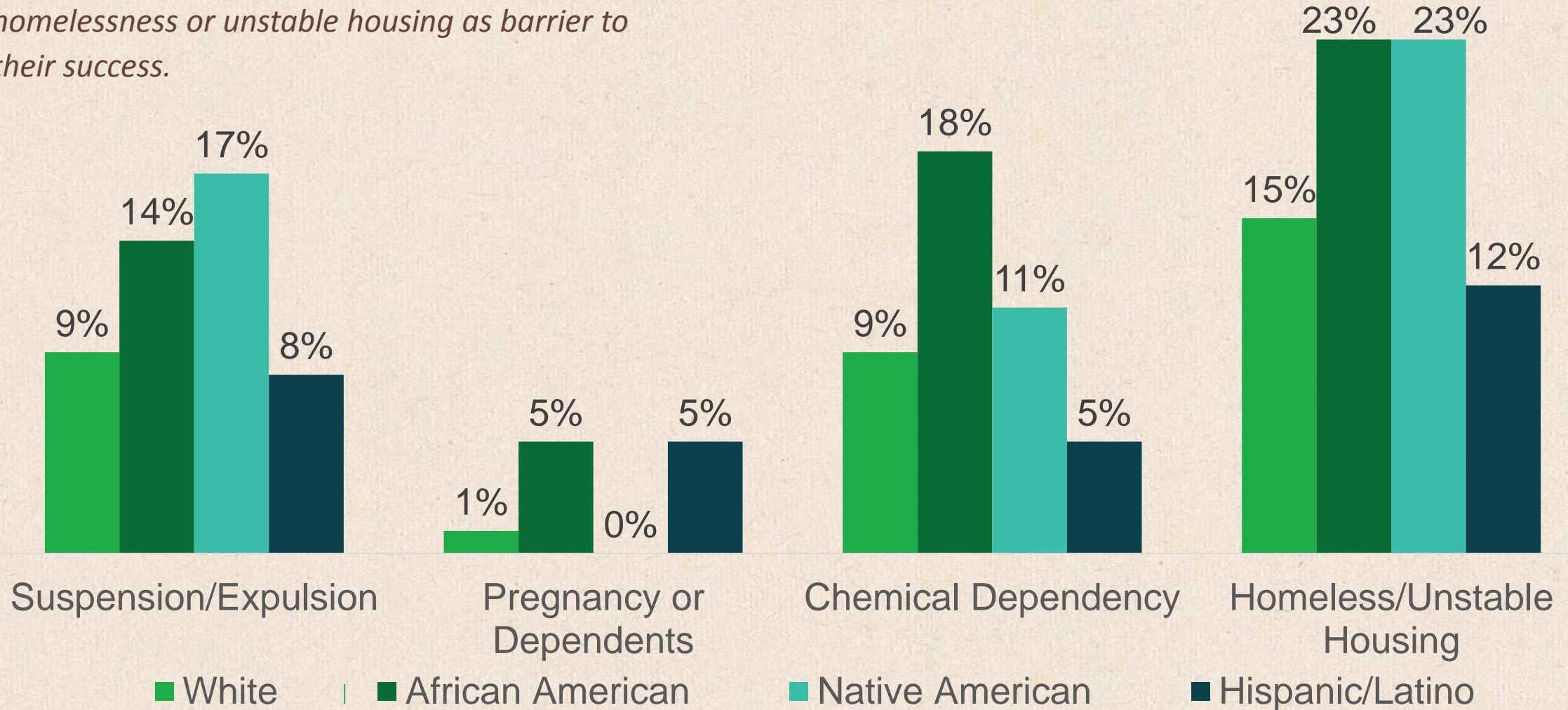
Deeper Exploration Needed

Graduation Rate by Race



High Risk Barriers by Race

Example: 15% of white students experience homelessness or unstable housing as barrier to their success.



↓ Data without Action ↓

IT'S TAKEN US 15 YEARS, BUT WE'VE FINALLY FIGURED OUT HOW THE TEENAGERS OF THE 90s THINK, ACT, AND CONSUME MEDIA.



What's Next

- Refinement of model and continuous improvement
- Extending service after graduation
- Addressing chronic absenteeism
- Addressing school mobility
- Addressing racial disparities in outcomes



Questions?